



## 5 Condo Must-Haves

- ✔ Free-flowing air and sunlight
- ✔ Fewer units per floor
- ✔ Sensible amenities
- ✔ Emergency power even inside your unit
- ✔ Easy payment terms

With quality that is sure to last, an Avida home is a must-have.

**Right for your budget, right for you.**

# Avida Towers

Alabang, Sucat, San Lazaro, Makati West, San Lorenzo,  
Bonifacio Global City, Centera, New Manila, Cebu.

**Avida**  
Affordable living at its best  
an AyalaLand company



## Free-flowing air and sunlight mean living well.

Avida's living spaces are smartly designed for your well-being. Sunlight and air naturally flow inside the entire unit, not just in one room - an important detail that will benefit you in the long run. For as low as P9,500 a month, it's a must-have!

Right for your budget, right for you.

**Avida Towers**

Alabang, Sucat, San Lazaro, Makati West, San Lorenzo,  
Bonifacio Global City, Centera, New Manila, Cebu.



**Avida**  
Affordable living at its best  
an AyalaLand company



**Fewer units per floor give you more personal space.**

Avida lets you enjoy more privacy with fewer neighbors. It saves you the stress of crowded hallways, long elevator lines, a busy lobby and jam-packed amenities – an important detail that will benefit you in the long run. For as low as P9,500 a month, it's a must-have!

Right for your budget, right for you.

**Avida Towers**

Alabang, Sucat, San Lazaro, Makati West, San Lorenzo,  
Bonifacio Global City, Centera, New Manila, Cebu.

**Avida**  
Affordable living at its best  
an AyalaLand company



## Sensible amenities put leisure in every day.

Avida gives you amenities that are fun but practical. Every facility is well-planned so you won't have to pay unnecessary maintenance dues - an important detail that will benefit you in the long run. For as low as P9,500 a month, it's a must-have!

Right for your budget, right for you.

**Avida Towers**

Alabang, Sucat, San Lazaro, Makati West, San Lorenzo,  
Bonifacio Global City, Centera, New Manila, Cebu.



**Avida**  
Affordable living at its best  
an AyalaLand company



## Emergency power even inside your unit means living without brownouts.

Avida eases the stress of power outages by providing more stand-by electricity. You can keep your lights on and even turn on your TV and ref – an important detail that will benefit you in the long run. For as low as P9,500 a month, it's a must-have!

Right for your budget, right for you.

**Avida Towers**

Alabang, Sucat, San Lazaro, Makati West, San Lorenzo,  
Bonifacio Global City, Centera, New Manila, Cebu.

**Avida**  
Affordable living at its best  
an AyalaLand company



## Easy payment terms mean living without worries.

Avida now offers a stretched payment scheme that's lower than ever. You can easily own a condo without compromising your lifestyle. For as low as P9,500 a month, it's a must-have!


Right for your budget, right for you.

**Avida Towers**

Alabang, Sucat, San Lazaro, Makati West, San Lorenzo,  
Bonifacio Global City, Centera, New Manila, Cebu.

# Avída Towers

Global City

Love where you live 





Love the world around you





# Project Information

Located along Bonifacio Triangle, living at Avida Towers Global City puts you within reach of the best that BGC has to offer.

Here at Avida Towers Global City you are close to:

- **Place of Worship:** St. Michael's Church
- **Schools:** International School Manila, British School Manila, Japanese School
- **Offices:** HSBC, Del Monte Philippines, GE Philippines, Sony
- **Commercial centers:** Bonifacio High Street, Fort Square, Fort Strip
- **Hospital:** St. Luke's Medical Center

# Location Map





# Site Development Plan and View Analysis

Fronting Triangle Drive / Facing Ortigas / Pasig Skyline

TRIANGLE DRIVE



TOWER 1

CLUBHOUSE

OPEN LAWN

Fronting 9<sup>th</sup> Ave./  
Facing Makati Skyline

9 TH AVENUE

TOWER 2

PLAY AREA

LAWN

St. Michael the Archangel Church

10 TH AVENUE

Fronting 10<sup>th</sup> Ave./  
Facing East / BGC / Taguig

39 TH AVENUE

Fronting 39<sup>th</sup> Ave / Facing BGC Skyline



# Building Perspective



- 1 TOWER 1 - 14 Residential Floors
- 2 TOWER 2 - 16 Residential Floors
- 3 Amenity Floor - Pool Area, Clubhouse
- 4 Podium Floors - Three (3) Parking Levels
- 5 Residential Parking Entrance
- 6 Tower Lobbies





Love spending time at home





# Building Features

✓ Main Lobby

✓ Mailbox for each Unit

✓ 2 Elevator Units per Tower

✓ Adequate Emergency Power

a. 100% on safety; 50% on common areas

b. 1 power outlet, 1 ref outlet & 1 lighting unit for Studio and 1-BR units

c. 1 power outlet, 1 ref outlet & 2 lighting units for 2-BR units

✓ Fire Protection / Alarm System

✓ Telephone and Cable Provisions

✓ Internet (Wi-Fi) Ready (*within the amenity area*)



# Community Amenities

- Swimming Pool
- Clubhouse
- Landscaped Areas
- Outdoor Gym Equipment
- Play Area





A home you'll keep falling in love with







## Tower 1

18 Floors

- Ground Level - Lobby Area and Office space
- Levels 2 to 4 -112 Parking Slots
- Levels 5 to 18 - 224 Residential Units

## Tower 2

20 Floors

- Ground Level - Lobby Area and Office space
- Levels 2 to 4 -133 Parking Slots
- Levels 5 to 20 - 256 Residential Units

# Tower 1 Typical Floor Plan

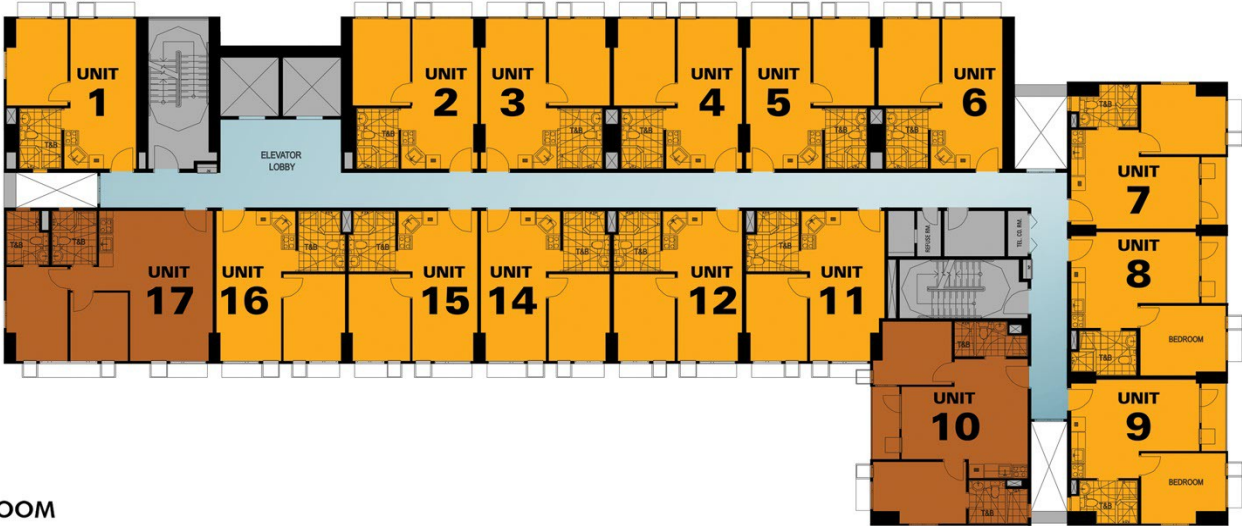


NORTH

Fronting Triangle Drive

Fronting Ninth Avenue

Fronting Tenth Avenue



- 1 BEDROOM
- 2 BEDROOM

Fronting 39th Avenue



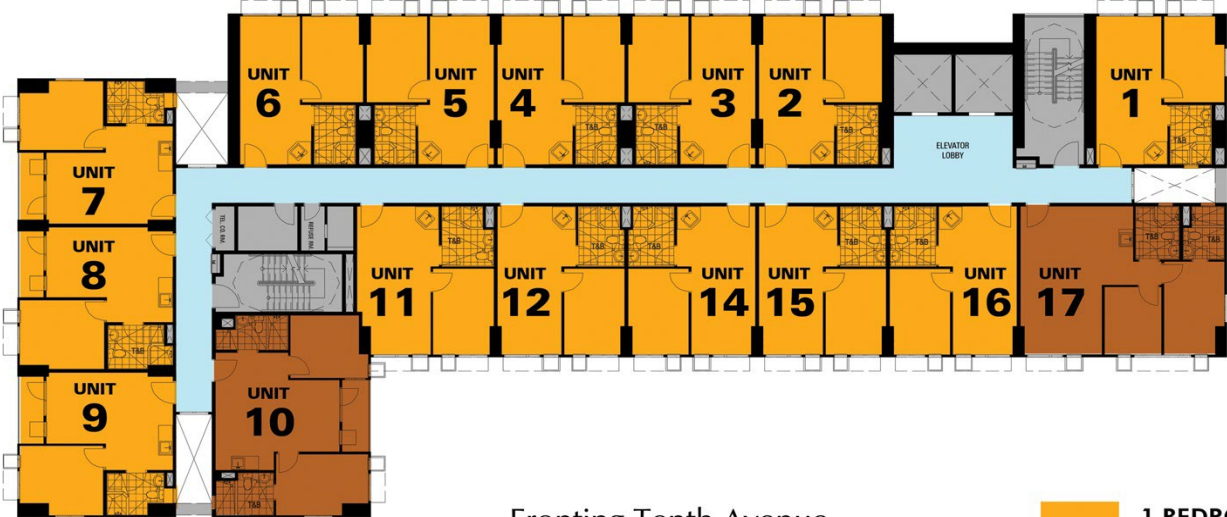
# Tower 2 Typical Floor Plan



Fronting Ninth Avenue

Fronting 39th Avenue

Fronting Triangle Drive



Fronting Tenth Avenue

- 1 BEDROOM
- 2 BEDROOM

# Unit Layouts



Typical 1 - Bedroom  
APPROX 37.06 sq.m.



Typical 1 - Bedroom w/ Balcony  
APPROX 42.2 sq.m.



# Unit Layouts



Typical 2 - Bedroom  
APPROX 58.15 sq.m.



Typical 1 - Bedroom w/ Balcony  
APPROX 57.9 sq.m.

# Deliverables

- Painted Walls and Ceiling
- Painted Interior Partitions
- Flat Slabs
- Ceramic Tiles
- Under Counter & Overhead Kitchen Cabinets
- Kitchen Sink & Laminated Countertop
- Grease Trap
- Panoramic Windows
- Smoke Detector & Water Sprinkler
- Electrical Fixtures
- Telephone / Cable Provisions
- Complete T&B with Ventilation
- Utility Area with Ceramic Tiles / Laundry Room



# Disclaimer

The particulars, details and visuals shown herein are intended to give a general idea of the project and as such, are not to be relied as statements of fact. While such particulars and details are based on present plans which have been prepared with utmost care and are given in good faith, interested parties are invited to verify their factual correctness and subsequent changes, if any. The contents herein are subject to change without prior notice and do not constitute part an offer or contract.

Series of March 2011

TLS No. ENCRFO-10-05-13